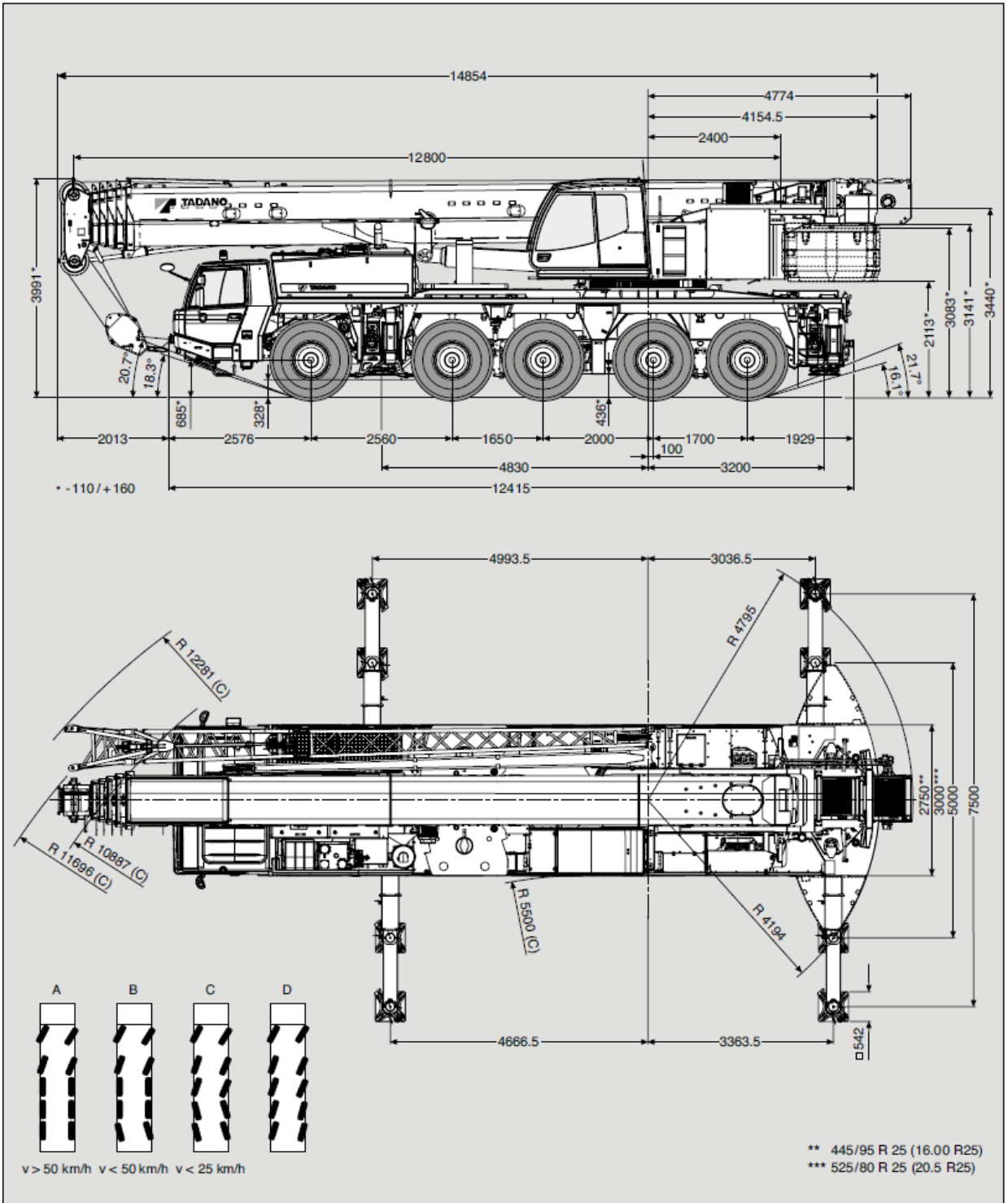




ATF 130G-5





ATF 130G-5

	Achse /Axe Essieu / Eje	1	2	3	4	5	Gesamtgewicht / Total weight Poids total / Peso total
	(t)	12	12	12	12	12	60*

* Incl. 6,3 t Gegengewicht, 3,8 m/ 10,2 m/ 18,0 m Auslegerverlängerung, 63 t Unterflasche, 10 t Hakengeschirr, Antrieb 10 x 8, Bereifung 445/95 R 25 (16,00 R 25).

* Incl. 6.3 t counterweight, 3.8 m/ 10.2 m/ 18.0 m boom extension, 63 t hook block, 10 t swivel hook, drive 10 x 8, tyres 445/95 R 25 (16.00 R 25).

* Incl. de 6,3 t contrepoids, 3,8 m/ 10,2 m/ 18,0 m flèche, 63 t moufle, 10 t élingues, entraînement 10 x 8, pneus 445/95 R 25 (16,00 R 25).

* Incl. contrapeso de 6,3 t, 3,8 m/ 10,2 m/ 18,0 m plumín, 63 t gancho, 10 t gancho de bola, tracción 10 x 8, neumáticos 445/95 R 25 (16,00 R 25).

	Traglast / Lifting capacity / Force de levage / Capacidad de elevación	Rollen / Sheaves Pulies / Poleas	Stränge / Parts of line Brins / Ramales de cable	Gewicht / Weight Poid / Peso
	123.6 t (Typ / Type / Typo 125)*	7	15	1200 kg
75.5 t (Typ / Type / Typo 80)*	5	9	800 kg	
59 t (Typ / Type / Typo 63)*	3	7	600 kg	
59 t (Typ / Type / Typo 63)	3	7	600 kg	
17.1 t (Typ / Type / Typo 25)	1	2	375 kg	
8.7 t (Typ / Type / Typo 10)	-	1	300 kg	

* Doppelhaken

* Rame horn

* Moufle avec crochet marin

* Gancho doble



		1	2	3	4	5	6	7	8	9	10	11	12	R1	R2	
445/95 R 25 (16.00 R 25)		3	3	4	6	7	9	12	15	20	25	32	41	3	4	69%*
km/h		6	8	10	13	16	21	27	35	45	58	74	85	6	8	52%
385/95 R 25 (14.00 R 25)		2	3	4	5	6	8	11	14	18	23	29	38	3	3	79%*
km/h		6	7	9	12	15	19	25	32	41	53	68	85	6	8	58%

* Mir Geländeübersetzung

* Avec mode tout terrain

* Off road range

* Con transmisión todo terreno

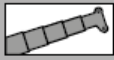
V+	Stufenlos Infinitely variable Progressivement variable Infinitamente variable	Seil Rope Câble Cable	Max. Seilzug Max. single line pull Effort maxi au brin simple Trio máximo por ramal
	0 - 130 m/min für einfachen Strang single line au brin simple ramal simple	21 mm / 250 m	85 kN
	0 - 130 m/min für einfachen Strang single line au brin simple ramal simple	21 mm / 250 m	85 kN
	0 - 1.6 min ⁻¹		
	- 1.0° - + 82.7°	ca. 42 s approx. 42 s env. 42 s aproximadamente 42 s	
	12.8 m - 60.0 m	ca. 380 s approx. 380 s env. 380 s aproximadamente 380 s	

Der Kraft-Mayer

MAYER

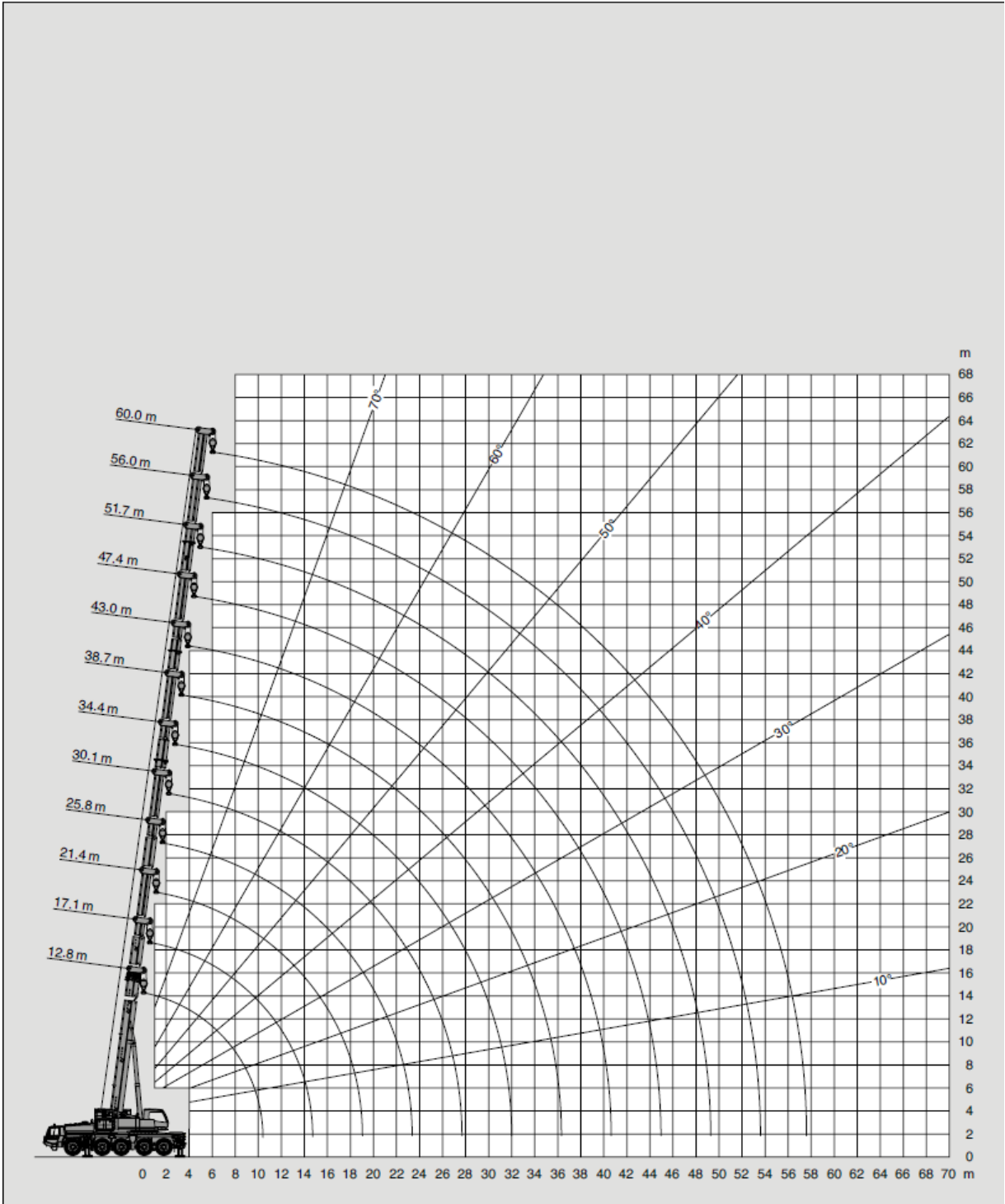
TADANO

ATF 130G-5



42.3t

DIN/ISO/EN



TADANO

ATF 130G-5




21.7t
DIN/ISO/EN

→ m	12.8 m*	12.8 m	17.1 m	21.4 m	25.8 m	30.1 m	34.4 m	38.7 m	43.0 m	47.4 m	51.7 m	56.0 m	60.0 m
2.7	120.0**												
3.0	107.0**	102.9**	90.0	90.0									
3.5	97.0	94.0	90.0	90.0	70.0								
4.0	88.5	86.5	86.4	86.0	70.0								
4.5	80.4	79.4	79.3	78.8	70.0	54.3							
5.0	74.4	72.9	72.8	72.2	70.0	51.3	44.0						
6.0	65.1	61.6	62.0	61.2	61.5	50.0	42.3	32.8					
7.0	57.7	52.9	53.3	53.4	52.8	49.3	38.4	32.8	27.1				
8.0	47.5	46.1	46.4	46.5	45.7	44.4	38.0	32.8	27.1	21.4			
9.0	38.6	38.6	39.0	39.1	39.9	38.2	35.8	30.3	27.1	21.4	16.6		
10.0	32.2	32.2	32.6	32.7	33.4	32.9	32.9	28.1	26.5	21.4	16.6	13.2	
11.0			27.8	27.8	28.6	29.8	29.1	26.2	24.7	21.4	16.6	13.2	10.6
12.0			24.2	24.5	25.9	25.9	25.2	24.3	23.1	21.3	16.6	13.2	10.6
14.0			19.7	20.4	20.5	20.3	19.7	19.1	19.6	18.7	16.6	13.2	10.6
16.0				16.6	16.7	16.4	16.0	16.5	15.9	15.5	15.5	13.2	10.6
18.0				13.8	13.8	13.6	14.0	13.7	13.2	13.5	13.1	12.8	10.6
20.0					11.7	11.5	11.8	11.5	11.8	11.3	11.6	11.3	10.5
22.0					10.4	9.7	10.1	9.7	10.0	10.3	10.0	9.5	9.5
24.0						8.2	8.6	8.2	8.9	8.8	8.5	8.0	8.0
26.0						7.1	7.9	7.3	7.9	7.6	7.3	6.8	6.8
28.0							7.1	6.8	6.9	6.6	6.3	5.8	5.8
30.0							6.3	6.1	6.0	5.7	5.4	5.0	5.0
32.0								5.4	5.3	5.0	4.7	4.2	4.2
34.0								4.7	4.7	4.3	4.0	3.6	3.6
36.0									4.1	3.8	3.5	3.0	3.0
38.0									3.6	3.3	3.0	2.6	2.6
40.0									3.2	2.9	2.6	2.1	2.1
42.0										2.5	2.2	1.7	1.7
44.0										2.2	1.8	1.4	1.4
46.0											1.6	1.1	1.1
48.0											1.3		

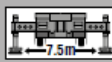
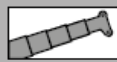



12.8t
DIN/ISO/EN

→ m	12.8 m*	12.8 m	17.1 m	21.4 m	25.8 m	30.1 m	34.4 m	38.7 m	43.0 m	47.4 m	51.7 m	56.0 m	60.0 m
2.7	120.0**												
3.0	106.9**	102.1**	90.0	90.0									
3.5	96.4	93.1	90.0	90.0	70.0								
4.0	87.1	84.8	84.7	84.2	70.0								
4.5	79.4	76.8	76.6	76.1	70.0	54.3							
5.0	73.8	69.8	70.2	69.2	69.8	51.3	44.0						
6.0	64.6	58.7	59.1	59.2	55.7	50.0	42.3	32.8					
7.0	49.8	49.8	50.4	49.0	46.6	43.4	38.4	32.8	27.1				
8.0	38.6	38.6	39.1	39.2	39.1	36.7	35.5	32.7	27.1	21.4			
9.0	31.1	31.1	31.6	31.7	32.5	32.6	30.2	27.9	26.7	21.4	16.6		
10.0	25.9	25.9	26.9	27.8	28.6	28.2	26.2	24.2	23.2	21.4	16.6	13.2	
11.0			23.5	24.3	24.4	24.2	22.9	21.9	21.2	19.9	16.6	13.2	10.6
12.0			20.3	21.0	21.2	20.9	20.3	20.3	18.8	18.5	16.6	13.2	10.6
14.0			15.6	16.4	16.5	16.2	16.7	16.3	15.7	15.1	14.3	13.2	10.6
16.0				13.0	13.3	12.9	13.3	12.9	13.3	13.3	12.6	11.7	10.6
18.0				10.5	11.3	10.3	11.2	10.6	11.4	11.0	10.6	9.8	9.6
20.0					9.3	8.7	9.6	9.5	9.4	9.1	8.8	8.3	8.1
22.0					7.8	7.9	8.1	7.9	7.9	7.6	7.2	6.8	6.8
24.0						6.7	6.9	6.7	6.7	6.3	6.0	5.6	5.6
26.0						5.7	5.9	5.7	5.7	5.3	5.0	4.6	4.6
28.0							5.0	4.9	4.8	4.5	4.2	3.8	3.8
30.0							4.4	4.2	4.1	3.8	3.5	3.0	3.0
32.0								3.6	3.5	3.2	2.9	2.4	2.4
34.0								3.1	3.0	2.7	2.4	1.9	1.9
36.0									2.6	2.2	1.9	1.5	1.5
38.0									2.2	1.8	1.5	1.1	1.1
40.0									1.8	1.5	1.2		
42.0										1.2	0.9		
44.0										0.9			



ATF 130G-5



9.4t

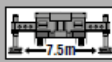
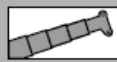
Fahrzustand

DIN/ISO/EN

m	12.8 m*	12.8 m	17.1 m	21.4 m	25.8 m	30.1 m	34.4 m	38.7 m	43.0 m	47.4 m	51.7 m	56.0 m	60.0 m	
2.7	120.0**													
3.0	106.9**	101.8**	90.0	90.0										
3.5	96.4	92.4	90.0	90.0	70.0									
4.0	87.0	83.6	83.5	82.9	70.0									
4.5	79.2	75.5	75.4	74.8	70.0	54.3								
5.0	73.6	68.6	69.0	67.9	66.4	51.3	44.0							
6.0	62.7	57.5	57.9	56.4	51.2	48.8	42.3	32.8						
7.0	45.5	45.5	46.1	45.0	43.1	39.6	38.0	32.8	27.1					
8.0	35.2	35.2	35.7	35.8	35.4	34.8	32.0	29.4	27.1	21.4				
9.0	28.3	28.3	28.7	29.9	31.3	29.5	27.2	25.0	23.9	21.4	16.6			
10.0	23.4	23.4	25.1	26.0	26.1	25.4	23.5	23.2	21.5	20.1	16.6	13.2		
11.0			21.3	22.1	22.3	22.0	20.6	20.5	18.9	18.6	16.6	13.2	10.6	
12.0			18.4	19.2	19.3	19.0	19.5	18.1	17.1	16.6	15.5	13.2	10.6	
14.0			13.8	14.6	14.8	14.5	15.0	14.6	14.4	14.3	13.5	12.5	10.6	
16.0				11.5	12.3	11.3	12.5	11.8	12.4	11.8	11.1	10.3	10.0	
18.0					9.2	9.9	9.7	10.2	10.1	9.7	9.3	8.5	8.3	
20.0						8.2	8.2	8.4	8.3	8.2	7.9	7.6	7.1	7.0
22.0					6.8	6.9	7.0	6.9	6.8	6.5	6.2	5.7	5.7	
24.0						5.8	5.9	5.8	5.7	5.4	5.1	4.6	4.6	
26.0						4.9	5.0	4.8	4.8	4.5	4.2	3.7	3.7	
28.0							4.2	4.1	4.0	3.7	3.4	3.0	3.0	
30.0							3.6	3.4	3.4	3.1	2.8	2.3	2.3	
32.0								2.9	2.8	2.5	2.2	1.8	1.8	
34.0								2.4	2.4	2.0	1.8	1.3	1.3	
36.0									2.0	1.6	1.3	0.9	0.9	
38.0									1.6	1.3	1.0			
40.0									1.3	0.9				

* Nach hinten / * Over rear / * A l'arrière / * Sobre la parte trasera

** Mit Zusatzhubausrüstung / ** With additional lifting equipment / ** Avec équipement supplémentaire / ** Con equipo adicional



6.3t

DIN/ISO/EN

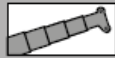
m	12.8 m*	12.8 m	17.1 m	21.4 m	25.8 m	30.1 m	34.4 m	38.7 m	43.0 m	47.4 m	51.7 m	56.0 m	60.0 m
2.7	120.0**												
3.0	106.9**	101.6**	90.0	90.0									
3.5	96.1	91.8	90.0	90.0	70.0								
4.0	86.7	82.4	82.2	81.7	70.0								
4.5	79.0	74.3	74.5	73.6	70.0	54.3							
5.0	73.4	67.4	67.8	67.6	61.2	51.3	44.0						
6.0	57.5	56.4	56.5	51.9	49.1	44.9	40.7	32.8					
7.0	41.6	41.6	42.2	40.9	39.1	38.1	34.8	31.7	27.1				
8.0	32.0	32.0	32.6	32.7	33.8	31.5	28.8	26.4	25.1	21.4			
9.0	25.7	25.7	27.6	28.5	28.4	26.6	24.4	24.1	22.2	20.7	16.6		
10.0	21.2	21.2	22.9	23.8	23.9	22.8	21.9	20.9	19.2	18.6	16.6	13.2	
11.0			19.4	20.2	20.3	19.9	19.8	18.3	17.9	16.7	15.5	13.2	10.6
12.0			16.4	17.3	17.5	17.2	17.5	16.2	16.0	15.7	14.3	13.2	10.6
14.0			12.1	13.0	13.9	12.8	14.0	13.2	13.5	12.7	11.9	11.0	10.6
16.0				10.1	10.8	10.9	11.2	11.0	11.0	10.4	9.8	8.9	8.7
18.0				8.0	8.7	8.8	9.0	8.8	8.8	8.4	8.1	7.4	7.2
20.0					7.1	7.2	7.3	7.2	7.2	6.8	6.5	6.0	5.9
22.0					5.8	5.9	6.1	5.9	5.9	5.5	5.2	4.8	4.8
24.0						4.9	5.0	4.9	4.9	4.5	4.2	3.7	3.8
26.0						4.1	4.2	4.1	4.0	3.7	3.4	2.9	2.9
28.0							3.5	3.4	3.3	3.0	2.7	2.2	2.2
30.0							3.0	2.8	2.7	2.4	2.1	1.6	1.6
32.0								2.3	2.2	1.9	1.6	1.2	1.2
34.0								1.9	1.8	1.5	1.2		
36.0									1.4	1.1			
38.0									1.1				

Der
Kraft-Mayer

MAYER


TADANO

ATF 130G-5



3.9t

DIN/ISO/EN

 m	12.8 m*	12.8 m	17.1 m	21.4 m	25.8 m	30.1 m	34.4 m	38.7 m	43.0 m	47.4 m	51.7 m	56.0 m	60.0 m
2.7	117.5**												
3.0	105.5**												
3.5	94.5	101.0	90.0	90.0									
4.0	84.9	90.8	90.0	90.0	70.0								
4.5	77.1	81.2	81.1	80.6	70.0								
5.0	69.7	73.2	73.6	72.5	66.2	54.3							
6.0	53.0	66.3	66.8	63.6	56.6	50.8	44.0						
7.0	38.2	53.0	52.4	48.0	45.3	42.4	38.0	32.8					
8.0	29.3	38.2	38.9	37.1	37.3	34.7	31.6	28.7	27.0				
9.0	23.4	29.3	30.5	32.3	30.7	28.6	26.1	25.6	23.1	21.4			
10.0	19.2	23.4	25.4	26.3	25.8	24.1	23.3	21.8	20.0	18.6	16.6		
11.0		19.2	21.0	21.8	22.0	20.6	20.4	18.9	18.5	17.0	15.8	13.2	
12.0			17.4	18.4	18.5	17.9	17.8	16.5	16.9	15.7	14.3	13.2	10.6
14.0			14.6	15.5	16.5	15.4	15.7	14.9	15.1	14.1	13.2	12.2	10.6
16.0			10.6	11.6	12.4	12.3	12.7	12.6	12.1	11.3	10.6	9.7	9.4
18.0				8.8	9.6	9.7	9.9	9.8	9.8	9.2	8.6	7.8	7.6
20.0				6.9	7.6	7.7	7.9	7.8	7.8	7.4	7.1	6.3	6.2
22.0					6.1	6.2	6.4	6.3	6.2	5.9	5.6	5.1	5.0
24.0					5.0	5.1	5.2	5.1	5.0	4.7	4.4	3.9	3.9
26.0						4.1	4.3	4.2	4.1	3.8	3.5	3.0	3.0
28.0						3.4	3.5	3.4	3.3	3.0	2.7	2.2	2.2
30.0							2.9	2.7	2.7	2.4	2.1	1.6	1.6
32.0							2.4	2.2	2.2	1.8	1.5	1.1	1.1
34.0								1.8	1.7	1.4	1.1		
								1.4	1.3	1.0			